

Product: Autopsy Table for obese corpses with electrical height adjustment, stationary
Cat.-No.: MA-3508

Special version for obese corpses with sink and centre pedestal

Work area with negative (1 drain at centre) embossment and special drain channels

Max. load: 350kgs

Type: 3508

Description

Special dissection table for obese corpses with center column in high and sturdy quality.

Special work area provided with sound absorbing material. Work surface with a negative (a central outlet) diagonal embossment with special drain channels for rapid drainage of large volumes of body fluids.

Sink 700 x 500 x 350(D)mm) with overflow valve and short neck inflow-tap. warm- / cold water knee operated valve. 2 flexible showers with 3m hose, which maybe fixed in the centre of the organ grossing table (optional accessory) for optimum wash down purposes over the whole length of the body.

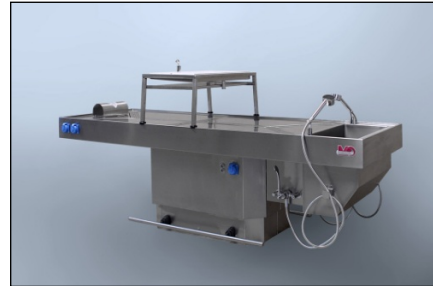
The pedestal contains: 2 revision doors for easy access in case of service, the extraction and sanitary installations and of a unique, sturdy st. st. frame for optimum stability.

The detachable strainer in the worktop is present to catch coarse impurities. With security locks and an overflow to protect tissue loss and constipation.

Completely encircling the edge profile with internal and external rounded corners for easy care and injury protection. Inner surfaces of the upper part complete with sound dampening coating. Completely waterproof lining.

Features

The waste system positioned below the work area includes a removable residue strainer (130 x 260 x 135mm deep), security locks and an overflow to avoid clogging.



MA-3508 Special autopsy table for obese corpses



MA-3508 with special shaped worktop and integrated covered drain channels plus sliding organ grossing table with instrument tray



MA-3508 Sink

Product Specification GFW

Completely encircling the edge profile with internal and external rounded corners for easy care and injury protection. Inner surfaces of the upper part complete with sound dampening coating. Completely waterproof lining.

Sink with 1 ½ "standpipe overflow valve. Hot- / cold water knee lever mixer tap with feed preference.

Flexible shower over sink, simultaneously centered at organ table, automatically suspended and moved over the entire table surface.

Centre column with inspection door for easy access to sanitary installations. 2 x sockets. Waterproof silicone seal of the pedestal in the base area prevents penetration of fluid / bacteria into the interior. Incl. 3 m flexible hose

Specifications

Material: stainless steel 1.4301 DIN EN 320 double polished for all parts

Fittings: chrome-plated brass

Sink dimensions: 700 (L) x 500 (W) x 350 (D) mm

Autopsy table dimensions: 2600 (L) x 1000 (W) x 750 - 950 (H) mm

Weight: 455 kgs

Waste water connection: NW 50 with O-ring

Hot / cold water connection through the centre column: 1 / 2 "copper pipe.

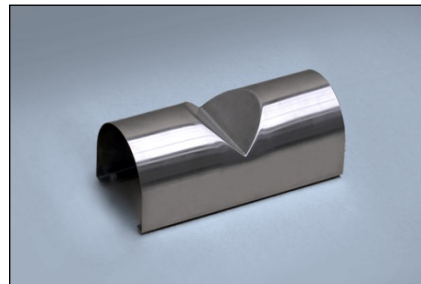
Electrical connection through the centre column: 230, 3x1,5mm² approx. 1000mm long, open end, fuse: 16Amp.

Optional Accessories

- organ table with cutting board (corian) and drain holes. Removable side walls. Drainage at centre of sectioning area. 2 splash guards. Slide tray for instruments.
- Plastic gliders for easy movement of organ-table at side rails of autopsy table. Type: MA-0985
- elbow water fixture
- hydro aspirator
- electrical ¼ hp grinder (disposer) below sink (not available for all versions)
- plastic work area for X-ray applications in forensic medicine
- autopsy tools / instrument sets on request
- head rest for adults with rubber feet
- head rest for children with rubber feet

Country of Origin

Manufactured by MEDIS MT GmbH in Germany acc. to EN and German norms and the health & safety regulations of the EC and Germany!



MA-0986 Stainless steel headrest with rubber feet (also available in full rubber)



Height adjustment of MA-3508 by UP / DOWN switch and per foot switch. 230V socket is splash water proof (IP55)



MA-0985 Organ grossing table with cutting board, instrument tray and holder for shower



MA-0985 Organ table which slides over the entire length of the autopsy table