

Product: Multifunction Autopsy Table with side wall extraction and automatic body transfer. Fixed height

Cat.-No.: MA-3500

Multifunction Autopsy Table with side wall extraction and automatic body transfer. Fixed height

Type: 3500

Description

New multifunction dissecting table concept for the easy exchange of 3 different worktops (anatomy, embalming and pathology). The upper part of the table is formed like a trough. This plenum has a residue strainer (130x260x135mm deep). At the two flank walls of the table so called "double slots" are present for an effective fume extraction regulated by an external fan or central extraction system. The waste air is drawn through the pedestal and further through the floor into the atmosphere. The electrical vertically adjustable Universal Transporter MA-2010 or a scissor type lift truck is used for docking to the multifunction table in order to do the transfer of the body tray.

We guarantee:

- pollutant and odourless air in the breathing area of the user
- no air noises
- no draughts

The following easily interchangeable body trays are available:

MA-3505 worktop for pathology with 3 drain channels and negative embossment

MA-3506 worktop for embalming with 4-part, perforated grid plates for the best possible fume extraction

MA-3507 worktop for gross anatomy student education and forensic medicine (transfer worktop with 8 small wheels)

Concept and functions

The area below the work plate (plenum) has a noise dampening coating. The worktops have drain holes for effective liquid drainage into the plenum and the residue sink i. e. strainer.

A flap at the end of the table top serves for docking the Universal Transporter with electronic elevation adjustment if one uses the transfer worktop (body ray) with 8 small wheels.



MA-3500 Anatomy version with dissecting worktop MA-3507



MA-3500 Pathology version with autopsy worktop MA-3505



MA-3500 Embalming / Forensic version with worktop MA-3507

The sink has a standpipe overflow valve. Hot- / cold water mixer tap with two presettings. A flexible shower (3 m) over the sink, can be positioned at the same time centric to the organ table which is movable over the complete body length.

Pedestal with 2 inspection doors for easy accessibility to exhaust air or sanitary installations.

2 x 230V electrical outlets, splash water proof (IP64) .

Tail gate for transfer worktop (body tray).

The special construction of the air slots as well as a slot cover prevents water and waste to enter the air extraction system.

Specifications

Material: stainless steel DIN 1.4301 (AISI 306) double polished

Dimensions sink: 400 (L) x 500 (W) x 200 (D) mm

Dimensions worktop: 2080 (L) x 760 (W) x 80 (H) mm

Dimensions of table: 2600 (L) x 900 (W) x 850 (H) mm

Required air volume: max. 1600 m³ / h (adjustable)

Weight: about 350kg

Assembly / media connection data: drawing on request

Optional versions

- electronic height adjustment 780 - 1080mm with push button "UP" / "DOWN". Advanced tandem telescope technology with 2 columns and 4 servo motors. Completely vibration free run. Maintenance free two-pillar structure (no hydraulics).

- Version without sink (length = 2200mm)

Optional Accessories

- Organ table with corian grossing board, inner inclination incl. splash guard, instrument tray and PTFE sliding pads with guides for the rim of the autopsy table. Incl. safety stop at the end of the table (prevents slipping off the table). Working height according to user specification.

- skull fixation of stainless steel (anti-slip) with V notch

- steady water rinse system for flushing the plenum during the dissection / autopsy work

- elbow and special taps

- electric grinder below the sink (not available for all tables)



Body transfer procedure assisted by MA-2010 universal transporter



Option: water rinse system below work area



MA-2016 Air supply unit with integrated daylight source for all autopsy, embalming or dissecting work



MA-0985 Organ table with grossing board, instrument tray and holder for shower

- "transfer" worktop made of plastic for X-ray work e.g. in forensic medicine
- worktop surface with cm grid graduation. Laser technology for use in forensic medicine
- autopsy instrument sets (all versions)
- cover for extraction slots (when cleaning the plenum)
- fresh air inlet unit (ceiling mounted) with adjustable louvers and illumination
- hydro aspirator

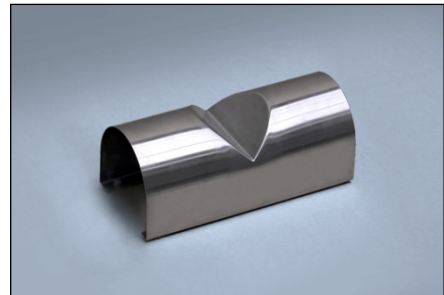
Note:

The "Dome" extraction

We produce the so called "Dome" extraction system only at the request of our customer and do not guarantee the contamination of the air ducts with water or debris and the equal / uniform extraction over the entire length of the table.

Country of Origin

Manufactured by MEDIS MT GmbH in Germany acc. to EN and German norms and the health & safety regulations of the EC and Germany!



MA-0986 Stainless steel headrest with rubber feet (also available in full rubber)



Autopsy table with „Dome“ extraction which we do not recommend. The base of the table is not "one piece" but interrupted with a large hole. This allows water and debris to enter the extraction system, which is a big risk

MEDIS
Medical Technology
Anatomy-Forensic Medicine-Pathology