

Product: Autopsy Table with pedestal and height adjustment Cat.-No.: MA-0982

Autopsy Table (Pedestal Design) with plain work area and 300mm height adjustment from 780 – 1080mms

Type: 0982.1

Description

Standard autopsy table with center column in high quality execution. Work area provided with sound absorbing pad. Work surface with a negative = concave (one central drain) or positive = convex (two drains left and right) embossment.

Extra large square pedestal (1200 x 600mm) with strong base plate for optimum strength and stability.

Sink 500 x 400 x 250(D)mm) with overflow-valve and shortneck-inflow-tap. warm - / cold water knee operated valve. Flexible shower with 3m hose, which maybe fixed in the centre of the organ sectioning table (optional accessory) for optimum wash down purposes over the whole length of the body.

The pedestal contains 2 revision doors for easy access in case of service, the extraction and sanitary installations and of a unique, sturdy stainless steel frame for optimum stability.

Description

The detachable strainer in the worktop is present to catch coarse impurities. With security locks and an overflow to protect tissue loss and constipation.

Completely encircling the edge profile with internal and external rounded corners for easy care and injury protection.

Inner surfaces of the upper part complete with sound dampening coating. Completely waterproof lining.

Features

- 2 x splash proof 220V receptacles and up / down switches on both sides of the pedestal for effective work cycle
- The double slot extraction system avoids dirt and waste to enter the duct work and the inside of the pedestal
- Adjustable height by means of 2 electronically controlled lifting columns for optimum stability. Maintenance-free design. Smooth lifting action. (no hydraulic system which needs frequent maintenance). This unique service free feature guarantees a very good sturdy design and consequently, a long life cycle of the product itself under daily tough work conditions



MA-0982 Autopsy Table with square pedestal and electronic, maintenance-free height adjustment. Version with concave (negative) shaped worktop



MA-0982 Standard Autopsy table with height adjustment from 780 – 1080mm and positive (convex) shaped worktop

Technical data

Material: stainless steel EN/DIN 1.4301 (AISI 306) double polished for all parts

Dim. sink: 500(W) x 400(L) x 250(D)mm
Dim perforated work area: 2060(L) x 620(W) x 80(H)mm
Dim. overall: 2600(L) x 900(W) x 780-1080(H)mm

Weight: 380kgs

Optional Configurations

- "PerfuTek" Inner Body Fixation System consisting of:
Electrical pump with adj. pressure / 3 different needles / tubing set.
All placed at a detachable platform mounted to the table

Optional Features / Accessories

- organ table with cutting board (corian) and drain holes. Removable side walls. Drainage at centre of sectioning area. 2 splash guards. Slide tray for instruments. Plastic gliders for easy movement of organ table at side rails of autopsy table. Type: MA-0985
- elbow water fixture
- hydro aspirator
- electrical ¼ hp grinder (disposer) below sink
- plastic work area for X-ray applications in forensic medicine
- autopsy tools / instruments on request
- head rest for adults with rubber feet
- head rest for children with rubber feet

Country of Origin

Manufactured by MEDIS MT GmbH in Germany acc. to EN and German norms and the health & safety regulations of the EC and Germany!



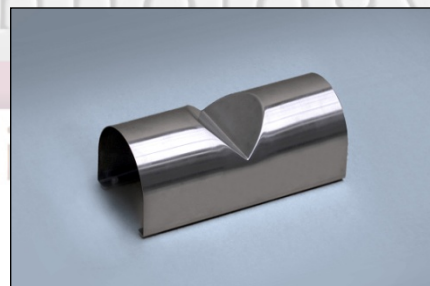
Height adjustment by UP / DOWN switch.
230V socket is splash water protected (IP55)



MA-0985 Organ grossing table with cutting board, instrument tray and holder for shower



MA-0985 Organ Table with dissecting set



Stainless steel headrest with rubber feet. Also available in full rubber