

**Product:** Autopsy Table with transfer worktop (roll on / roll off), side wall downdraft extraction and height adjustment

**Cat.-No.:** MA-2002

**Autopsy Table (pedestal design) with "transfer worktop", "side wall" downdraft extraction (to be connected to an in-house extraction system), sink and electronical height adjustment from 780 – 1080mm**

**Type:** 2002

### Description

Newly designed concept with a so called "transfer" (roll on / roll off) worktop (body tray), which is equally used as a body tray. The upper part of the table is constructed like a large sink, where the body tray is transferred to. It contains a large drain sewer with a sieve. The bottom of the plenum has no opening for extracted air! At two sides of the walls of the plenum a double slot system was incorporated, which guarantees an effective extraction at both sides of the work area over the complete length of the body. The actual extraction is provided by an external fan system or an in-house extraction system. The air is extracted through the pedestal and by duct work installed in the actual floor and the in-house extraction system.

### Construction

The underside of the plenum is noise dampened. Body trays are delivered with two closeable drain holes in the centre of the body tray. The complete top of the 2002 table is designed to be a double wall system where the extracted air can flow freely into the 200mm dia. plastic duct work.

Warm - / coldwater knee operated valve. A flexible shower with 2m hose, which maybe fixed in the centre of the organ dissecting table (accessory) for optimum wash down purpose over the whole length of the body.

The pedestal contains: a revision door for easy access in case of service, the extraction and sanitary installations and the unique, 24V, electronically operated telescopic 2 lifting devices with integrated limit switches, self locking device, motors integrated into column, certified acc. to EN 60601 for medical applications. This double column design guarantees maximum stability of the table.

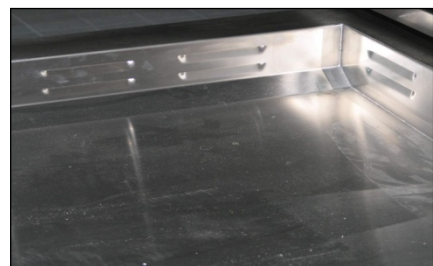
The pedestal also contains an integrated Standard Floor Extraction System (SFES) which picks up all fumes which are heavier than air directly from the floor into the in-house extraction system. The large investment in a floor extraction system build into the lower walls of the room is therefore no longer necessary.



MA-2002 Autopsy Table with roll on / roll off work area (body tray) inserted



Body transfer procedure assisted by MA-2010 universal transporter



Unique side wall downdraft extraction system

Due to the expansion of the flexible tubing, when autopsy tables with height adjustment are operated, the extraction system inside the pedestal contains a gastight, flexible duct (200mm dia.) which has a metal spiral lining so no wear will occur.

## Standard Features

- 2 x splash proof 230V receptacles
- 2 x "up / down" switches for electrical height adjustment
- loading hinge with gasket for body tray transfer onto the table
- fixation system for the body tray
- the double slot side wall extraction system avoids dirt and waste to enter the duct work and the inside of the pedestal.
- unique " SFES " Standard Floor Extraction System via slots at the lower part of the pedestal
- laser graduation of side walls 0 - 2000cm (1cm increments)

## Technical Specifications

Material: stainless steel EN/DIN 1.4301 (AISI 306) double polished for all parts

Dim. sink: 500(W) x 400(L) x 250(D)mm

Dim. transfer work area: 2080(L) x 620(W) x 80(H)mm

Outer dim. autopsy table: 2600(L) x 900(W) x 780-1080(H)mm

Weight: 390kgs

Necessary extraction volume: appr. 200 - 1600 m<sup>3</sup>/h adjustable

## Optional configurations

- configuration without sink (length = 2100mm)
- configuration with 3-piece perforated worktop

## Optional features / accessories

- organ table with cutting board (corian), concave embossment and drain holes. Removable side walls. Drainage at centre of sectioning area. 2 splash guards. Trays for instruments. Plastic gliders for easy movement of organ table at side rails. Type: MA-0985
- steady water flush system of plenum by means of spray jets
- elbow water fixture
- electrical ¼ hp erator (grinder) below sink
- plastic "Transfer" area for X-ray applications in forensic obductions
- autopsy tools / instruments
- hydro aspirator

## Country of Origin

Manufactured by MEDIS MT in Germany acc. to EN and DIN norms and valid regulations of Health & Safety Authorities.



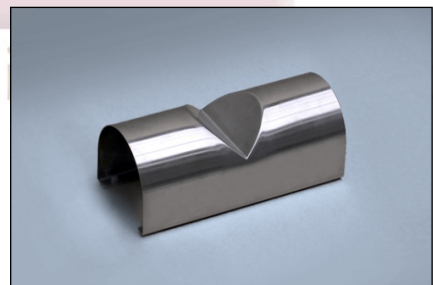
Transfer lid opened after insertion of roll on / roll off work area (body tray)



MA-0985 Organ table with grossing board, instrument tray and holder for shower



MA-0985 Organ Table



MA-0986 stainless steel headrest with rubber feet (also available in full rubber)